

Ms O' Sullivan - 5th Class

Daily work during school closure - tick as you go

Tuesday May 5th	
Starlight – Read pg. 170.	
Starlight pg. 174 Section E – Subject & Predicate	
Spell Well Week 29 – pg. 60 + 61	
Work it out - pg. 60 Week 29 (Tuesday)	
Planet Maths - pg. 116 A & B. You can use a calculator.	
Abair Liom – Léigh Bosca 3 Ich. 144, Scríobh Ich. 150 Roinn I (top section only) Smaointe na gcarachtar - match the thoughts to the characters.	
SESE - Europe countries labelling activity. Worksheet included below.	

Wednesday May 6th	
Starlight – Read pg. 171	
Starlight – p. 175 Section F (There are 3 parts to this section. a)Find 3 facts and opinions from the story, b)write fact or opinion on the sentences, c)write your own facts and opinions)	
Work It Out - pg. 61 (Wed)	
Planet Maths - p. 117 A & B	
Abair Liom – Léigh Bosca 4 Ich. 145, Scríobh Ich. 150 Roinn I (bottom section) Using the vocabulary write one sentence about what each character thinks of the concert/songs	

Thursday May 7th

Starlight – Read pg. 172

Starlight - pg. 173 Sec C. and pg. 174 Sec D.

Work it out pg. 61 – (Thurs)

Planet Maths – pg. 118 B **(you can use a calculator for B)** & D (C & E – optional)

Abair Liom – Léigh Bosca 5 & 6 lch. 145. Scríobh lch 145 Roinn A Ceist 1 - 8 (**Look for key words from the questions in the story**)

- 1. An Aoine seo chaite chuaigh Síofra (finish the answer).**
- 2. Chuaigh (fill in here) in éineacht lei.**
- 3. Bhí siad ag an 3Arena go luath chun (finish the answer).**
- 4. Nuair a thainig an chad bhanna amach (finish the answer)**
- 5. Bhí radharc iontach ag Síofra nuair a (finish the answer)**
- 6. Chabhraigh (fill in) le Síofra nuair a thit sí.**
- 7. Thosaigh Síofra ag caoineadh nuair a chonaic sí (finish the answer).**
- 8. Bhí gliondar croí ar na páistí sa deireadh nuair a bhí cead acu (finish the answer).**

SESE - European capitals labelling activity. Worksheet included below.

Friday May 8th

Starlight – Read pgs. 170 – 172

Starlight pg. 173 Section A

Work It Out - Weekly Test 29 pg. 80

Planet Maths – pg. 119 B, C, D, E. **For section D remember to convert percentages or decimals to fractions before trying to find a part of a number. Will post more examples on how to convert. Don't forget those tutorials I posted on April 27th.**

Abair Liom – Léigh Roinn B Ich. 146. Scríobh Roinn C Ich. 146

an cluiche - the game

an cheolchoirm - the concert

an fhéile - the festival

an scannán - the movie

That barr - excellent

Go hiontach - great

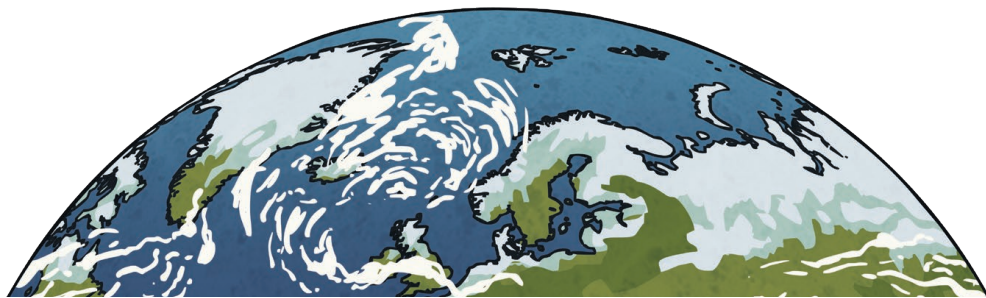
Ceart go leor - okay

Go dona - terrible

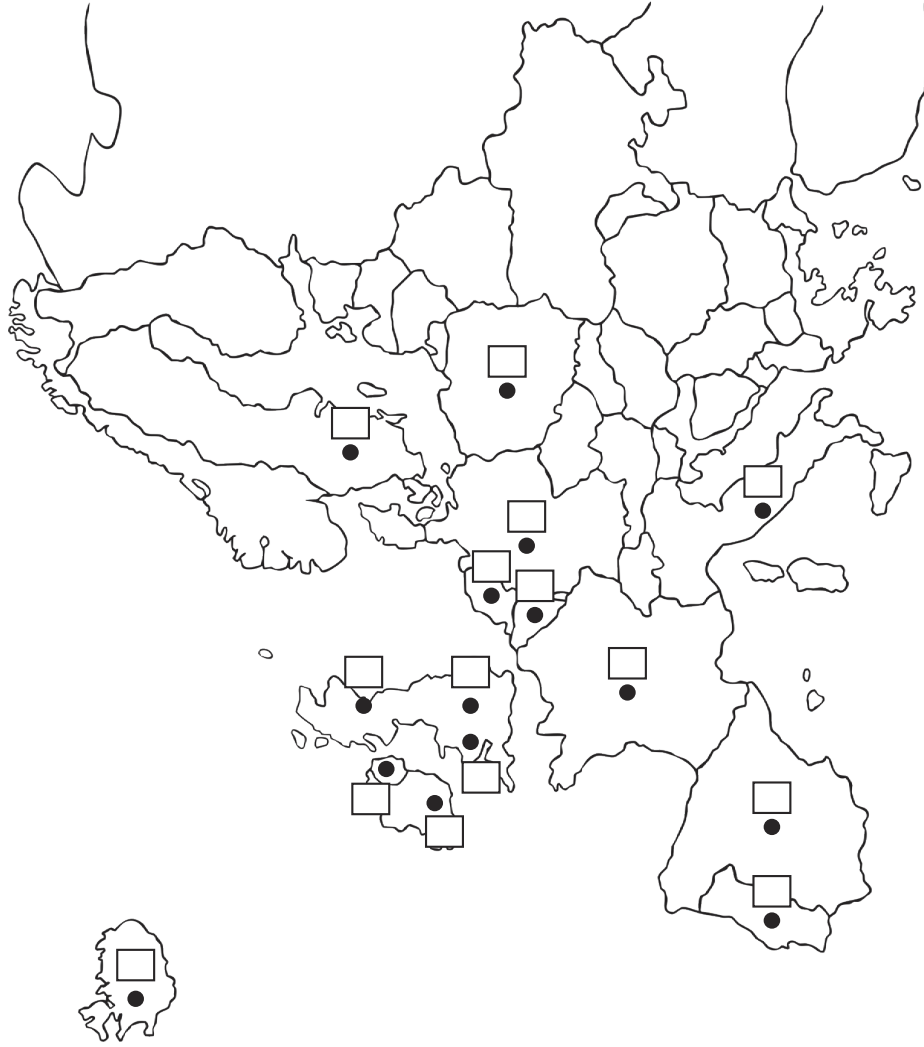
European Countries and Capital Cities

Write down the capital cities of the countries below. Don't forget capital letters!

France -	P	_____
Germany -		_____
Spain -	M	_____
Italy -		_____
Portugal -	L	_____
Sweden -	S	_____
Norway -	O	_____
Finland -		_____
Hungary -	B	_____
Ireland -	D	_____
Iceland -	R	_____
Poland -		_____
Czech Republic -	P	_____
Latvia -		_____
Belarus -		_____



Countries of Europe



Key

- 1 Iceland
- 2 Ireland
- 3 England
- 4 Portugal
- 5 Spain
- 6 France
- 7 Belgium
- 8 Netherlands
- 9 Italy
- 10 Germany
- 11 Sweden
- 12 Poland
- 13 Scotland
- 14 Wales
- 15 Northern Ireland